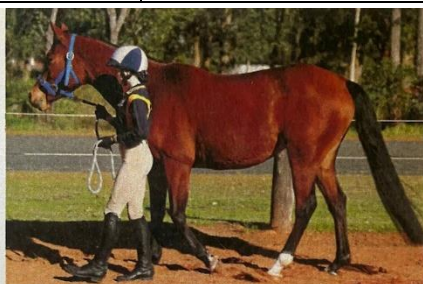


Ready2Ride Lesson Plans

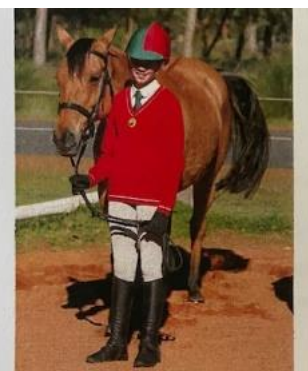
Lesson Plan 16	Leading correctly (Unmounted)		
Skill level of riders	E certificate level		
Lesson length	35 mins		
SEQUENCE	DURATION	ACTIVITY	NOTES
Introduction	5 mins	My Name is: (Coach name) My Topic is: How to safely lead your horse or pony. The purpose of this lesson is: learn and practice the correct way to lead your horse or pony to stay safe.	Rider – check boots, helmet, jewellery, uniform Horse – check head collar
Safety Check		Emergency Stop: Halt until further notice. Safety of Area: Check Surface and area eg: gates closed.	
Gear Check		Medical check: “Is there is any condition or problem that might affect your learning throughout this lesson?”	
Equipment Needed		Gear check – Horse to present in correctly fitted halter and lead rope. Rider in riding boots, gloves, helmet. Eg. Cones or flags placed in a straight line to practice stop and go.	
Explanation	5 mins	Why? Important to always lead your horse correctly as it helps to keep you safe and your horse calm. It is more likely that your horse will be good under saddle if he is good to lead. How? Rider stands at horses left shoulder. Hand closest to the horse holds the lead just under his chin with excess rope gathered safely in the other hand. Look where you are going. When? Leading to and from paddock, floating, for farrier, vet etc.	E certificate manual pg 18-20
Demonstration	5 mins	Practical demonstration. Demonstrate stop, go, and leading horse use pressure / release / reward methods shown on page 20 of E manual.	Remember that if you use a demonstration rider, they won't see your demonstration.
Warm up	5 mins	“We will prepare our horse for the lesson with the following warm up” Riders to show how they will use forward pressure for go, backward pressure to stop. See photos below.	
Activity Execution	10 mins	Riders lead their pony around the arena focusing on the pony staying at the speed of the handler. Upon reaching the cones or flags, the combination practice the skill of stopping and then asking the pony to go. Practice skill on both reins.	Equipment Cones/flags placed one metre apart (on straight line) to assist with stop and go.
Cool down & Feedback	5 mins	Proceed to cool down ponies. Ask a mix of open and closed questions to group, eg: What safety equipment do we wear when leading? Summarise the lesson (tell the riders what you've taught them). Positive feedback and homework suggestions. Ask if they have any questions or feedback for you. Thank the riders and dismiss them safely!	
Evaluation		Record your reflections on the lesson in your Coach journal and note any particular problems riders may have experienced.	



The aid for stop is pressure on the lead rope in a backward direction.



The aid for go forward is pressure on the lead rope in a forward direction.



Make sure you are safe when leading your horse. Wear a helmet, boots and long pants.

Never wrap the lead rope or the reins around your hand or body.